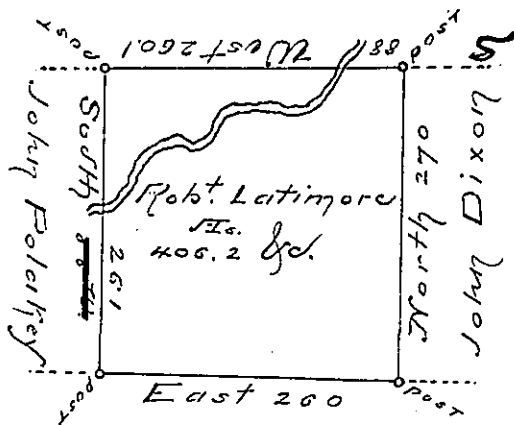


Hazle
Luzerne

C-217-121
Lewis Michlin



⊙ 137

Jas. Latimore
J-118

A Draft of a tract of land Called
 Situate adjoining land - Jas. Latimore & others in the
 County of Northumberland. Containing fo _____ and six
 acres ²/₁₀ & allawes Surveyed for Robt. Latimore
 the 8th Sept. 1793 by virtue of a warrant dated
 the 13th day of June 1793

To
 Daniel Brodhead Esq^r }
 Suror. Genl.

by _____

obliterated.

IN TESTIMONY that the above is a copy of the original remaining on file in the
 Department of Internal Affairs of Pennsylvania, made con-
 formably to an Act of Assembly approved the 16th day of
 February, 1833. I have hereunto set my Hand and caused
 the Seal of said Department to be affixed at Harrisburg, this

fifth day of May 1896.

James W. Fetter
 Secretary of Internal Affairs.